

# WEIGHING ASSEMBLY HL-3-001/002

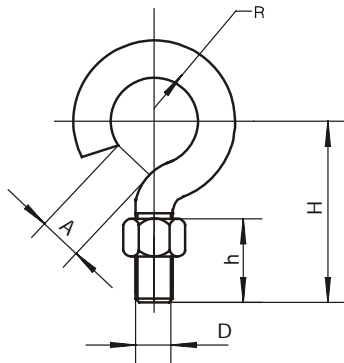
## Applications

- ◆ Conversion of mechanical scales
- ◆ Crane scales
- ◆ Packaging scales
- ◆ Hopper and tank scales



Assembled with S-type load cell.

## Outline Dimensions in mm(inches)



Capacity	Part number
25kg-50kg	HL-3-001-25/50Kg
100kg	HL-3-001-100Kg
200kg-300kg	HL-3-001-200/300Kg
500kg-1.5t	HL-3-002-500kg/1.5t

### Hook (Ring)

Capacity	Dimensions	D	H	h	R	A
25-50kg	M8	34	16	10	18	
		(1.34)	(0.63)	(0.39)	(0.71)	
100kg	M10	42	20	12	18	
		(1.65)	(0.63)	(0.47)	(0.71)	
200-300kg	M12	48	22	14	18	
		(1.89)	(0.79)	(0.55)	(0.71)	
500-1500kg	M12	48	22	14	0	
		(1.89)	(0.87)	(0.55)	0	

# WEIGHING ASSEMBLY HL-3-003

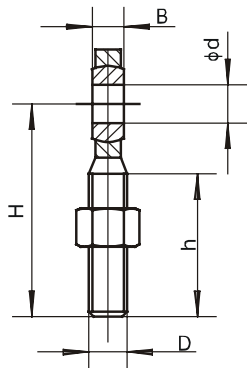
## Applications

- ◆ Conversion of mechanical scales
- ◆ Crane scales
- ◆ Packaging scales
- ◆ Hopper and tank scales



Assembled with S-type load cell.

## Outline Dimensions in mm(inches)



Capacity	Part number
25kg-50kg	HL-3-003-25/50Kg
100kg	HL-3-003-100Kg
200kg-300kg	HL-3-003-200/300Kg
500kg-1.5t	HL-3-003-500Kg/1.5t
2t-5t	HL-3-003-2/5t

### Rod end bearings

Capacity	Dimensions	D	H	h	B	d
25-50kg	M8	42	21	8	10	8
		(1.65)	(0.83)	(0.31)	(0.39)	(0.31)
100kg	M10	48	26	9	10	10
		(1.89)	(1.02)	(0.35)	(0.39)	(0.39)
200-300kg	M12	54	28	10	12	12
		(2.13)	(1.10)	(0.39)	(0.47)	(0.47)
500-1500kg	M12	54	28	10	12	12
		(2.13)	(1.10)	(0.39)	(0.47)	(0.47)
2t-5t	M20x1.5	78	43	16	20	20
		(3.07)	(1.69)	(0.63)	(0.79)	(0.79)