

# WEIGHING ASSEMBLY BM-9-402



Stainless steel, assembled with B9C or H9C.

| Capacity | Part number       |
|----------|-------------------|
| 5-20K    | BM-9-402-5/20K    |
| 30-75K   | BM-9-402-30/75K   |
| 100K     | BM-9-402-100K     |
| 150K     | BM-9-402-150K     |
| 200-250K | BM-9-402-200/250K |

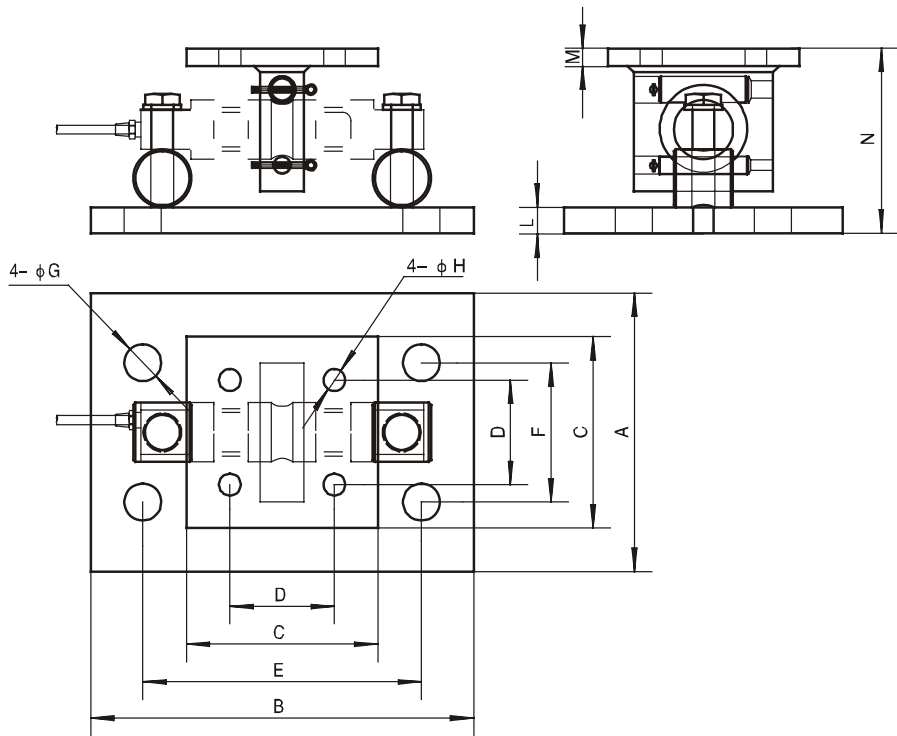
## Features

Stainless steel integrative assembly can be installed easily, suitable for testing load, excellent anti-side load ability.

Suitable for hopper and tank scales found in petroleum, chemical engineering industries.

Stainless steel can withstand corrosive environment.

## Outline Dimensions in mm(inches)



| Dimensions<br>Capacity | A                | B                | C                | D               | E                | F               | G              | H              | L              | M              | N               |
|------------------------|------------------|------------------|------------------|-----------------|------------------|-----------------|----------------|----------------|----------------|----------------|-----------------|
| 5-20K                  | 279.4<br>(11.00) | 203.2<br>(8.00)  | 139.7<br>(5.50)  | 76.2<br>(3.00)  | 203.2<br>(8.00)  | 101.6<br>(4.00) | 26.9<br>(1.06) | 16<br>(0.63)   | 19<br>(0.75)   | 12.7<br>(0.50) | 139.2<br>(5.48) |
| 30-75K                 | 381<br>(15.00)   | 254<br>(10.00)   | 203.2<br>(8.00)  | 130.3<br>(5.13) | 292.1<br>(11.50) | 152.4<br>(6.00) | 31<br>(1.22)   | 19.1<br>(0.75) | 25<br>(1.00)   | 19.1<br>(0.75) | 214.1<br>(8.43) |
| 100-150K               | 457.2<br>(18.00) | 304.8<br>(12.00) | 254<br>(10.00)   | 190.5<br>(7.50) | 355.6<br>(14.00) | 228.6<br>(9.00) | 35.1<br>(1.38) | 20.6<br>(0.81) | 31.8<br>(1.25) | 31.8<br>(1.25) | 264<br>(10.39)  |
| 200-250K               | 660.4<br>(26.00) | 304.8<br>(12.00) | 304.8<br>(12.00) | 228.6<br>(9.00) | 508<br>(20.00)   | 152.4<br>(6.00) | 47.8<br>(1.88) | 26.9<br>(1.06) | 50.8<br>(2.00) | 50.8<br>(2.00) | 400<br>(15.73)  |