

Capacity	Accuracy	Part number
500kg	C3	HM8-C3-500kg-6.5B6
1.0t	C3	HM8-C3-1.0t-6.5B6
2.0t	C3	HM8-C3-2.0t-6.5B6
2.5t	C3	HM8-C3-2.5t-6.5B6
3.0t	C3	HM8-C3-3.0t-6.5B6
5.0t	C3	HM8-C3-5.0t-6.5B6
10t	C3	HM8-C3-10t-6.5B6
15t	C3	HM8-C3-15t-6.5B6
20t	C3	HM8-C3-20t-6.5B6
25t	C3	HM8-C3-25t-6.5B6
30t	C3	HM8-C3-30t-6.5B6
50t	C3	HM8-C3-50t-6.5B6



Alloy steel, nickel-plated, welding-sealed.  
Suitable for vehicle scales, track scales, hopper scales and other electronic weighing devices.

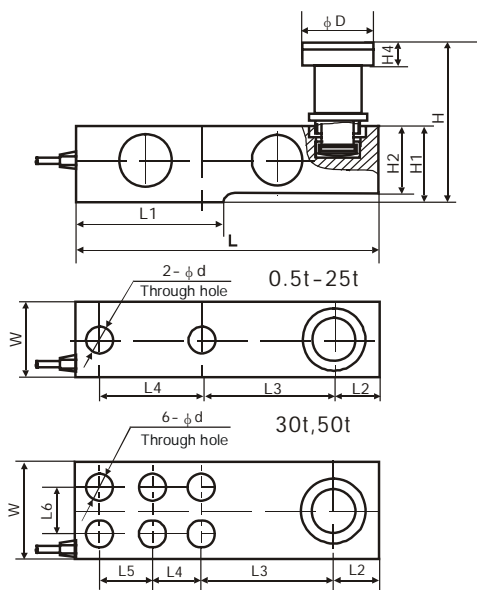
Weighing Assembly Available - See model HY-8-101 or HM-8-401 on page 84 and 87.

## Specifications

Accuracy Class	C3	Temperature effect on zero (%FS/10°C)	0.018
Rated output (mV/V)	2.0±0.002	Temperature, Compensated (°C)	-10~+40
Combined error (%FS)	0.02	Temperature, Operating (°C)	-35~+65
Non-linearity (%FS)	0.02	Excitation, Recommended (V)	5~12(DC)
Non-repeatability (%FS)	0.01	Excitation, Max. (V)	18(DC)
Creep (%FS/30min)	0.02	Safe Overload (%FS)	150
Input Resistance (Ω)	350±3.5	Ultimate Overload (%FS)	300
Output Resistance (Ω)	350±3.5	Protection Class	IP 68
Insulation Resistance (MΩ)	≥5000(50VDC)	Cable Length (m)	6.5
Zero Balance (%FS)	1.5	Cable spec	6-wire shielded cable φ 6.2mm
Temperature effect on span (%FS/10°C)	0.014	Remark	Equipped with special load button

Connections Red Input(+) Yellow Input(-) Blue Output(+) White Output(-)  
Brown Sense(+) Black Sense(-) Transparence (Shield)

## Outline Dimensions in mm(inches)



Dimensions	H1	H2	H3	H	D	d	W	L	L1	L2	L3	L4	L5	L6
Capacity														
0.5t-2t	43 (1.69)	37 (1.47)	5 (0.20)	57.9 (2.28)	35 (1.38)	13 (0.51)	37 (1.47)	203 (7.99)	95 (3.74)	22 (0.87)	98 (3.86)	64 (2.52)	/	/
2.5t	43 (1.69)	37 (1.47)	5 (0.20)	57.9 (2.28)	35 (1.38)	15 (0.59)	37 (1.47)	203 (7.99)	95 (3.74)	22 (0.87)	98 (3.86)	64 (2.52)	/	/
3t	43 (1.69)	37 (1.47)	5 (0.20)	62.9 (2.48)	35 (1.38)	15 (0.59)	37 (1.47)	203 (7.997)	95 (3.74)	22 (0.87)	98 (3.86)	64 (2.52)	/	/
5t	52 (2.05)	48 (1.89)	8 (0.31)	78.7 (3.10)	42 (1.65)	21 (0.83)	48 (1.89)	235 (9.25)	110 (4.33)	22 (0.87)	124 (4.88)	66 (2.60)	/	/
10t, 15t	67 (2.64)	60 (2.36)	12 (0.47)	127.7 (5.03)	57 (2.24)	28 (1.10)	60 (2.36)	279 (10.98)	133 (5.24)	32 (1.26)	140 (5.51)	82 (3.23)	/	/
20t, 25t	82.5 (3.25)	70 (2.76)	12 (0.47)	143.5 (5.65)	70 (2.76)	34 (1.34)	70 (2.76)	318 (12.52)	153 (6.02)	38 (1.50)	159 (6.26)	89 (3.50)	/	/
30t	115 (4.53)	90 (3.54)	18 (0.71)	174 (6.85)	70 (2.76)	26 (1.02)	96 (3.78)	374 (14.72)	189 (7.44)	44.5 (1.75)	181 (7.13)	76 (2.99)	51 (2.01)	46 (1.81)
50t	143 (5.63)	100 (3.94)	28 (1.10)	213 (8.39)	85 (3.35)	29 (1.14)	105 (4.13)	416 (16.38)	210 (8.27)	48 (1.89)	196 (7.72)	92 (3.62)	56 (2.20)	52 (2.05)