



S-beam, alloy steel, tension or compression applications. Suitable for hanging scales, mechanical conversion scales, hopper scales and other electronic weighing devices.

**Weighing Assembly Available-See Model HL-3 series on page 79 and 80.**

Capacity Accuracy Part number

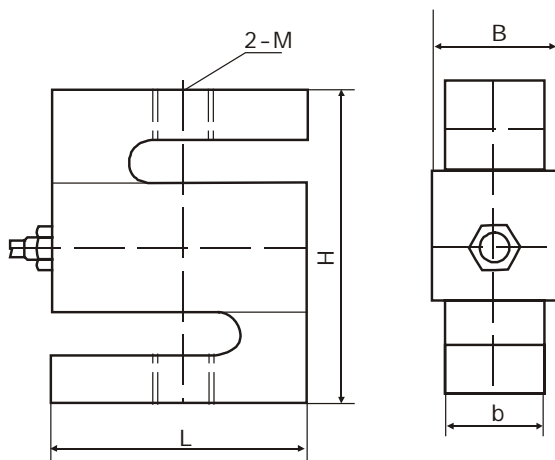
50kg	C3	H3G-C3-50kg-6B
100kg	C3	H3G-C3-100kg-6B
250kg	C3	H3G-C3-250kg-6B
500kg	C3	H3G-C3-500kg-6B
1.0t	C3	H3G-C3-1.0t-6B
2.5t	C3	H3G-C3-2.5t-6B
5.0t	C3	H3G-C3-5.0t-6B
7.5t	C3	H3G-C3-7.5t-6B
50 lb	N3	H3G-N3-50-6YB
75 lb	N10	H3G-N10-75-6YB
100 lb	N10	H3G-N10-100-6YB
150 lb	N10	H3G-N10-150-6YB
200 lb	N10	H3G-N10-200-6YB
250 lb	N10	H3G-N10-250-6YB
300 lb	N10	H3G-N10-300-6YB
500 lb	N10	H3G-N10-500-6YB
750 lb	N10	H3G-N10-750-6YB
1Klb	N10	H3G-N10-1K-6YB
1.5Klb	N10	H3G-N10-1.5K-6YB
2Klb	N10	H3G-N10-2K-6YB
2.5Klb	N10	H3G-N10-2.5K-6YB
3Klb	N10	H3G-N10-3K-6YB
5Klb	N10	H3G-N10-5K-6YB
10Klb	N10	H3G-N10-10K-6YB
15Klb	N3	H3G-N3-15K-6YB
20Klb	N3	H3G-N3-20K-6YB

**Specifications**

Accuracy Class	C3	N10	N3	Temperature effect on zero (%FS/10°C)	0.017	0.02
Rated output (mV/V)	3.0±0.008			Temperature, Compensated (°C)	-10~+40	
Combined error (%FS)	0.02	0.03		Temperature, Operating (°C)	-35~+65	
Non-linearity (%FS)	0.02	0.03		Excitation, Recommended (V)	5~12(DC)	
Non-repeatability (%FS)	0.01			Excitation, Max.(V)	18(DC)	
Creep (%FS/30min)	0.02	0.03		Safe Overload (%FS)	150	
Input Resistance (Ω)	430±60			Ultimate Overload (%FS)	300	
Output Resistance (Ω)	350±3.5			Protection Class	IP 67	
Insulation Resistance (MΩ)	≥5000(50VDC)			Cable Length (m)	6	
Zero Balance (%FS)	1.0			Cable spec	4-wire shielded PU cable φ5mm	
Temperature effect on span (%FS/10°C)	0.014	0.02				

Connections Red Input(+) Black Input(-) Green Output(+) White Output(-) Transparence (Shield)

**Outline Dimensions in mm(inches)**



Capacity	Dimensions				
	L	H	b	B	M
50kg,100kg (0.05-0.3Klb)	50.8 (2.00)	63.5 (2.50)	12.7 (0.50)	16.08 (0.63)	M8 1/4-28UNF
250kg,500kg (0.05-1.5Klb)	50.8 (2.00)	63.5 (2.50)	19.05 (0.75)	22.43 (0.88)	M12 1/2-20UNF
1t (2, 2.5Klb)	50.8 (2.00)	63.5 (2.50)	25.4 (1.00)	28.78 (1.13)	M12 1/2-20UNF
2.5t (3Klb)	76.2 (3.00)	101.6 (4.00)	25.4 (1.00)	28.78 (1.13)	M20×1.5 1/2-20UNF
5t (5,10Klb)	76.2 (3.00)	101.6 (4.00)	25.4 (1.00)	28.78 (1.13)	M20×1.5 3/4-16UNF
7.5t (15Klb)	101.6 (4.00)	139.7 (5.50)	31.75 (1.25)	35.13 (1.38)	M24×2 1-14UNF
20Klb	127 (5.00)	177.8 (7.00)	50.8 (2.00)	54.18 (2.13)	5/4-12UNF