



Alloy steel, welding—sealed.
Suitable for truck scales, automobile tester,
track scales and other electronic weighing devices.

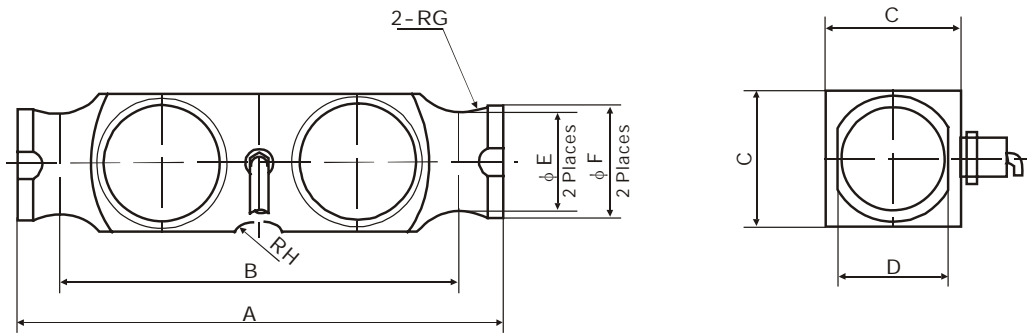
Capacity	Accuracy	Part number
50Klb	N10	HM9E-N10-50K-12B
65Klb	N10	HM9E-N10-65K-12B
100Klb	N10	HM9E-N10-100K-12B
125Klb	N10	HM9E-N10-125K-12B
200Klb	N10	HM9E-N10-200K-12B

Specifications

Accuracy Class	N10	Temperature effect on zero (%FS/10C)	0.017
Rated output (mV/V)	3.0±0.003	Temperature, Compensated (C)	-10~+40
Combined error (%FS)	0.02	Temperature, Operating (C)	-35~+65
Non-linearity (%FS)	0.017	Excitation, Recommended (V)	5~12(DC)
Non-repeatability (%FS)	0.01	Excitation, Max.(V)	18(DC)
Creep (%FS/30min)	0.02	Safe Overload (%FS)	150
Input Resistance (Ω)	700±7	Ultimate Overload (%FS)	300
Output Resistance (Ω)	700±7	Protection Class	IP 68
Insulation Resistance (MΩ)	≥5000(50VDC)	Cable Length (m)	12
Zero Balance (%FS)	1.0	Cable spec	4-wire shielded PU cable φ 7.5mm
Temperature effect on span (%FS/10C)	0.014		

Connections Red Input(+) Black Input(-) Green Output(+) White Output(-) Transparence (Shield)

Outline Dimensions in mm(inches)



Dimensions	A	B	C	D	φ E	φ F	RG	RH
Capacity(Klb)								
50, 65	260.35 (10.25)	215.9 (8.50)	76.2 (3.00)	55.88 (2.20)	52.32 (2.06)	60.96 (2.40)	25.4 (1.00)	25.4 (1.00)
100, 125	260.35 (10.25)	215.9 (8.50)	76.2 (3.00)	55.88 (2.20)	52.32 (2.06)	60.96 (2.40)	25.4 (1.00)	25.4 (1.00)
200	304.8 (12.00)	254 (10.00)	86.36 (3.40)	63.5 (2.50)	59.69 (2.35)	69.85 (2.750)	38.1 (1.50)	38.1 (1.50)