

Capacity	Accuracy	Part number
5Klb	N3	B9C-N3-5K-9B
10Klb	N10	B9C-N10-10K-9B
20Klb	N10	B9C-N10-20K-9B
30Klb	N10	B9C-N10-30K-9B
40Klb	N10	B9C-N10-40K-9B
50Klb	N10	B9C-N10-50K-9B
60Klb	N10	B9C-N10-60K-9B
75Klb	N10	B9C-N10-75K-9B
90Klb	N10	B9C-N10-90K-9B
100Klb	N10	B9C-N10-100K-9B
150Klb	N3	B9C-N3-150K-9B
200Klb	N3	B9C-N3-200K-9B
250Klb	N3	B9C-N3-250K-9B



17-4PH stainless steel, high stability and corrosion proof. Suitable for truck scales, automobile tester, track scales and other electronic weighing devices.

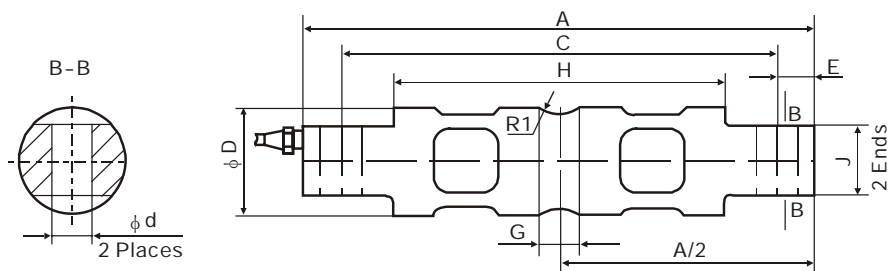
Weighing Assembly Available-See the model HM-9-401 or BM-9-402 on page 91 and 92.

Specifications

Accuracy Class	N10	N3	Temperature effect on zero (%FS/10°C)	0.017	0.025
Rated output(mV/V)	3.0±0.003		Temperature, Compensated (°C)	-10~+40	
Combined error (%FS)	0.02	0.03	Temperature, Operating (°C)	-35~+65	
Non-linearity (%FS)	0.017	0.03	Excitation, Recommended (V)	5-12(DC)	
Non-repeatability (%FS)	0.01		Excitation, Max.(V)	18(DC)	
Creep (%FS/30min)	0.02	0.03	Safe Overload (%FS)	150	
Input Resistance (Ω)	700±7		Ultimate Overload (%FS)	300	
Output Resistance (Ω)	700±7		Protection Class	IP 67	
Insulation Resistance (MΩ)	≥5000(50VDC)		Cable Length (m)	9	
Zero Balance (%FS)	1.0		Cable spec	4-wire shielded PU cable φ5mm(5K-20K), φ8mm(30K-250K)	
Temperature effect on span (%FS/10°C)	0.014	0.02			

Connections Red Input(+) Black Input(-) Green Output(+) White Output(-) Transperence (Shield)

Outline Dimensions in mm(inches)



Dimensions Capacity(Klb)	A	C	H	G	φD	J	φd	R1	E
5-10	206.2 (8.12)	174.6 (6.88)	133.1 (5.24)	15.7 (0.62)	φ43.2 (1.70)	28.4 (1.12)	φ16.7 (0.66)	R12.7 (0.50)	15.7 (0.62)
15-20	206.2 (8.12)	174.6 (6.88)	133.1 (5.24)	21.3 (0.84)	φ49.5 (1.95)	28.4 (1.12)	φ16.7 (0.66)	R12.7 (0.50)	15.7 (0.62)
30-75	260.4 (10.25)	215.9 (8.50)	165.1 (6.50)	25.4 (1.00)	φ76.2 (3.00)	60.2 (2.37)	φ26.9 (1.06)	R25.4 (1.00)	22.4 (0.88)
90-100	285.8 (11.25)	241.3 (9.50)	190.2 (7.49)	31.0 (1.22)	φ88.9 (3.50)	63.5 (2.50)	φ26.9 (1.06)	R38.1 (1.50)	22.4 (0.88)
150	285.8 (11.25)	241.3 (9.50)	190.2 (7.49)	31.0 (1.22)	φ99.1 (3.90)	71.1 (2.80)	φ26.9 (1.06)	R38.1 (1.50)	22.4 (0.88)
200-250	408.9 (16.10)	330.3 (13.00)	254.0 (10.00)	31.7 (1.25)	φ136.6 (5.38)	116.8 (4.60)	φ39.6 (1.56)	R50.8 (2.00)	39.4 (1.55)